

Installer reference guide

WLAN module heating

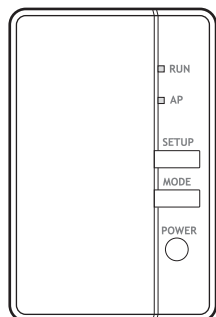


Table of contents

1	About this document	3
2	About the adapter	4
2.1	Components.....	4
2.2	Basic parameters.....	4
2.3	Compatibility.....	5
3	About the box	6
3.1	To unpack the adapter.....	6
4	Preparation	7
4.1	Installation site requirements.....	7
4.2	Overview of electrical connections	7
5	Installation	8
5.1	Precautions when installing the adapter.....	8
5.2	Overview: Installation	8
5.3	Connecting the electrical wiring.....	8
5.3.1	Precautions when connecting the electrical wiring.....	8
5.3.2	To connect the adapter with the unit.....	9
5.4	Closing the adapter.....	10
5.4.1	To close the adapter.....	10
5.5	Mounting the adapter	10
5.5.1	About mounting the adapter	10
5.5.2	To mount the adapter to the unit.....	10
5.6	Opening the adapter.....	11
5.6.1	About opening the adapter.....	11
5.6.2	To open the adapter.....	11
6	Starting up the system	13
7	Configuration	14
8	Hand-over to the user	15
9	Troubleshooting	16
9.1	Overview: Troubleshooting	16
9.1.1	Symptom: The LEDs do not turn on when the adapter is connected to the unit and the unit is powered ON	16
9.1.2	Symptom: The adapter is NOT responding to interaction with the indoor unit.....	16
9.1.3	Symptom: Nothing happens when the adapter is in AP mode	16

1 About this document

Target audience

Authorised installers

Documentation set

This document is part of a documentation set. The complete set consists of:

- **General safety precautions:**

- Safety instructions that you must read before installing
- Format: Paper (in the box of the indoor unit)

- **Installation manual:**

- Installation instructions
- Format: Paper (supplied in the kit)

- **Installer reference guide:**

- Installation instructions, configuration, application guidelines, ...
- Format: Digital files on <https://www.daikin.eu>. Use the search function 🔍 to find your model.

- **Declaration of conformity:**



INFORMATION: Declaration of conformity

Hereby, Daikin Europe N.V. declares that the radio equipment type BRP069A71 is in compliance with the Directive 2014/53/EU. The original declaration of conformity is available on <https://www.daikin.eu>. Use the search function 🔍 to find the declaration of conformity of your unit.

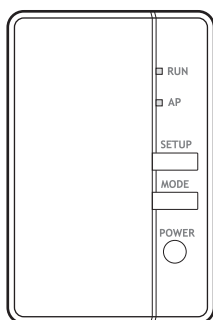
Latest revisions of the supplied documentation may be available on the regional Daikin website or via your dealer.

The original instructions are written in English. All other languages are translations of the original instructions.

2 About the adapter

Wireless LAN adapter to connect the heat pump system to the Daikin Cloud via the internet, allowing for control of the heat pump system with the ONECTA app.

2.1 Components



Component	Description
RUN	<ul style="list-style-type: none"> LED ON: adapter active as station, and connected to a network. LED flashing: adapter active as station and not yet connected to a network.
AP	<ul style="list-style-type: none"> LED ON: adapter active as access point, and mobile device associated. LED flashing: adapter active as access point, but no mobile device associated yet.
SETUP	Press to connect the adapter to a router.
MODE	Hold to toggle AP mode on and off.
POWER	Press to reset the adapter.

2.2 Basic parameters

Parameter	Value
Frequency range	2400 MHz~2483.5 MHz
Radio protocol	IEEE 802.11b/g/n
Radio frequency channel	1~13
Output power	0 dBm~18 dBm
Effective radiated power	17 dBm (11b) / 14 dBm (11g) / 13 dBm (11n)
Power supply	DC 14 V / 100 mA

2.3 Compatibility

Make sure the heat pump system is compatible for use with the adapter. For more information, see the installer reference guide of the heat pump system.

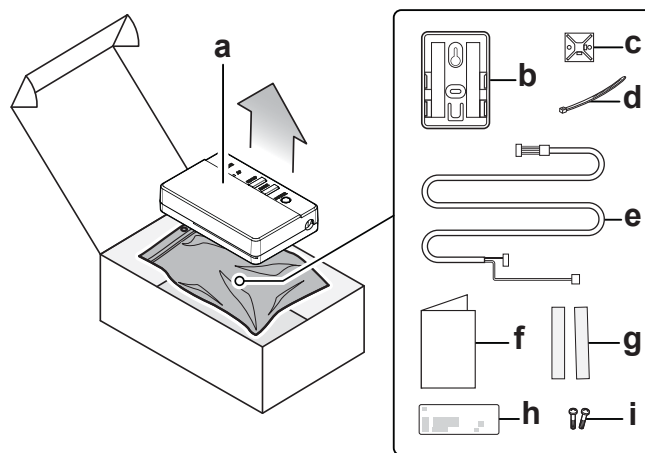
3 About the box

Keep the following in mind:

- At delivery, the unit **MUST** be checked for damage and completeness. Any damage or missing parts **MUST** be reported immediately to the claims agent of the carrier.
- Bring the packed unit as close as possible to its final installation position to prevent damage during transport.
- Prepare in advance the path along which you want to bring the unit to its final installation position.

3.1 To unpack the adapter

- 1** Open the box.
- 2** Take out the adapter.
- 3** Separate the accessories.



- a** Adapter
- b** Adapter holder with double-sided tape
- c** Cable tie mounting
- d** Cable tie
- e** Connection cable
- f** Installation manual
- g** Tape for adapter holder
- h** Label for manual
- i** Screws

4 Preparation

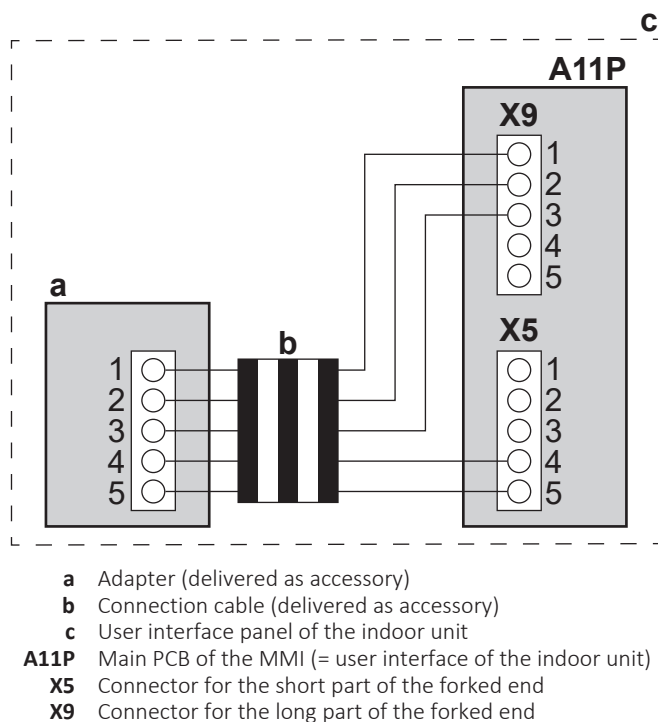
4.1 Installation site requirements

- The adapter is designed to be mounted to the indoor unit, in dry, indoor locations only.
- The exact location of the adapter depends on the type of indoor unit. For more information, see the addendum book for optional equipment of the indoor unit.
- The adapter is designed to be installed in a vertical orientation only.
- The adapter is designed to operate in ambient temperatures ranging from 5~35°C.

Do NOT install the adapter in the following places:

- In places where it is exposed to direct sunlight.
- In places where it is near a heat source.
- In places where it is exposed to a source of steam.
- In places where it is exposed to machine oil vapour.

4.2 Overview of electrical connections



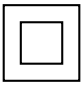
5 Installation

5.1 Precautions when installing the adapter



DANGER: RISK OF ELECTROCUTION

- Turn off the power supply before installing the adapter.
- Do NOT handle the adapter with wet hands.
- Do NOT let the adapter get wet.
- Do NOT disassemble, modify or repair the adapter.
- Grip the connector when disconnecting the connection cable.
- Turn OFF the power supply in case the adapter gets damaged.

Symbol	Explanation
	The protection of appliances marked with this symbol is ensured by double insulation and does not require a safety connection to electrical earth (ground).

5.2 Overview: Installation

The installation of the adapter consists of the following stages:

- 1 Connecting the electrical wiring;
- 2 Closing the adapter;
- 3 Mounting the adapter to the unit.



INFORMATION

Where to connect the electrical wiring on the indoor unit, and where to mount the adapter, depends on the type of indoor unit. For more information, see the addendum book for optional equipment of the indoor unit.

5.3 Connecting the electrical wiring

5.3.1 Precautions when connecting the electrical wiring



INFORMATION

Also read the precautions and requirements in the following chapters:

- General safety precautions
- Preparation

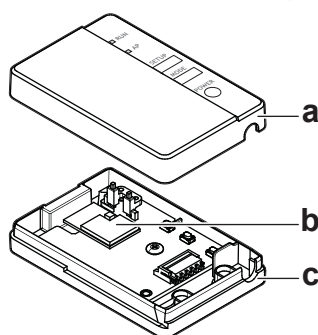


DANGER: RISK OF ELECTROCUTION

Do NOT turn on the power supply before you have connected the electrical wiring, closed the adapter, and mounted it to the indoor unit.

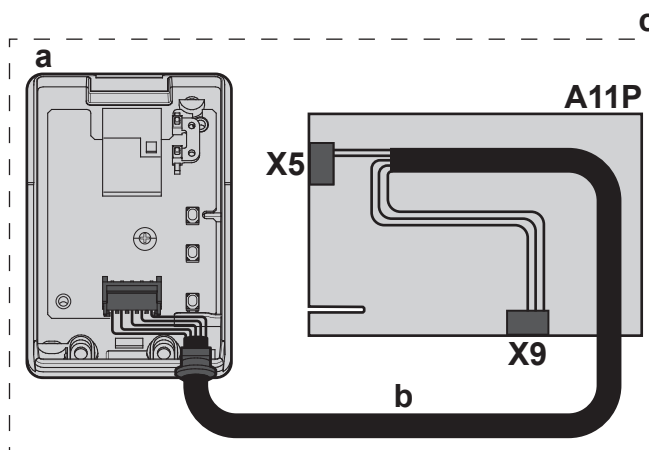
5.3.2 To connect the adapter with the unit

- 1 Separate the upper casing from the lower casing.



- a Upper casing
- b Adapter PCB
- c Lower casing

- 2 Connect the forked end of the connection cable to the indoor unit.
- 3 Connect the other end of the connection cable to the connector on the adapter PCB.
- 4 Fasten the cable and ensure strain relief.



- a Adapter (delivered as accessory)
- b Connection cable (delivered as accessory)
- c User interface panel of the indoor unit
- A11P Main PCB of the MMI (= user interface of the indoor unit)
- X5 Connector for the short part of the forked end
- X9 Connector for the long part of the forked end

**INFORMATION**

The exact location of the adapter and the routing of the connection cable depends on the type of indoor unit. For more information, see the addendum book for optional equipment of the indoor unit.

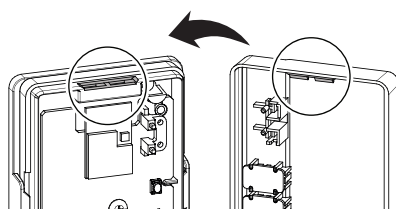
**INFORMATION**

Provide strain relief at indoor unit side by using the cable tie and cable tie mounting that are included as accessory.

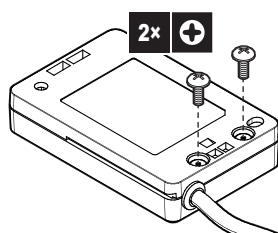
5.4 Closing the adapter

5.4.1 To close the adapter

- 1 Hook the front casing into the rear casing.

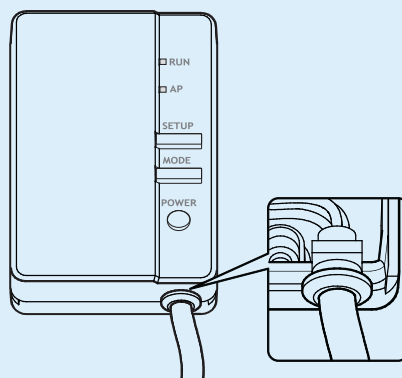


- 2 Insert the 2 screws from the accessory bag.



NOTICE

After closing the adapter, check that the connection cable is securely fastened.



5.5 Mounting the adapter

5.5.1 About mounting the adapter

Mount the adapter to the indoor unit by making use of the holder and tape that are included in the accessory bag.

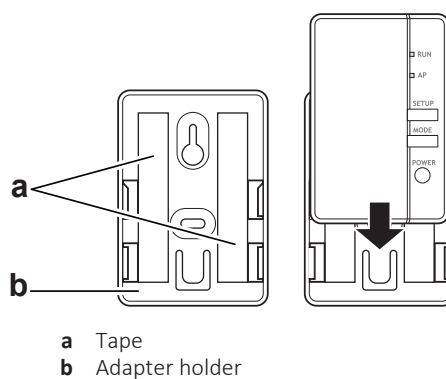


NOTICE

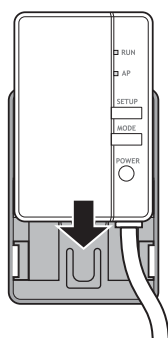
- Make sure that the part of the indoor unit to which you mount the holder is clean.
- Make sure to mount the holder to the indoor unit firmly, so that it can bear the weight of the adapter.

5.5.2 To mount the adapter to the unit

- 1 Attach the double-sided tape to the adapter holder.



- 2 With the tape, mount the holder to the indoor unit.
- 3 Slide the adapter into the holder.



INFORMATION

The exact location of the holder depends on the type of indoor unit. For more information, see the addendum book for optional equipment of the indoor unit.

5.6 Opening the adapter

5.6.1 About opening the adapter

The average installation procedure does NOT involve opening the adapter. However, in case you do have to open it, follow below procedure.

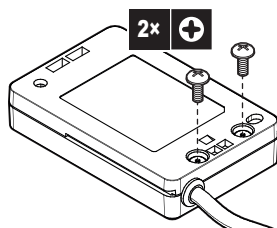


DANGER: RISK OF ELECTROCUTION

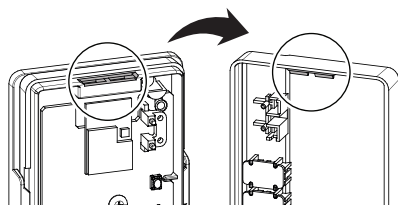
Before opening the adapter, turn OFF the power to the indoor unit.

5.6.2 To open the adapter

- 1 Remove the screws with a screwdriver.



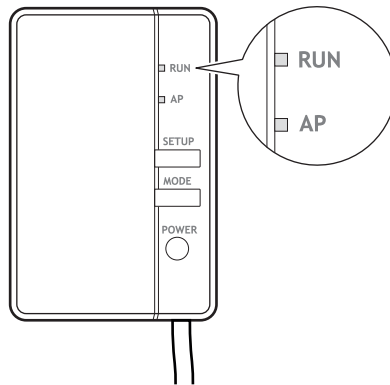
- 2 Unhook the front casing from the rear casing.



6 Starting up the system

The adapter gets its power from the indoor unit. For the adapter to function, make sure it is connected to the indoor unit, and the indoor unit is powered on.

After powering on the system, the RUN and AP LEDs light up and go out again after the adapter is operational. Depending on the system layout, it can take up to 1 minute before the adapter is operational.



INFORMATION

Before starting up the system, make sure that the adapter is closed and properly mounted to the indoor unit.

7 Configuration

To configure the adapter, open the ONECTA application on your mobile device and follow the in-app instructions. The ONECTA application is available on Google Play and the App Store:

<http://www.onlinecontroller.daikineurope.com/>



8 Hand-over to the user

After having installed and configured the adapter, hand over this installation manual to the user and make the user aware of the following safety precautions.



DANGER

- Do NOT disassemble, modify, or repair the adapter. This can cause fire, electrical shock, or injury.
- Do NOT allow the adapter to get wet or use it when bathing or doing similar activities with water. This can cause electrical shock or fire.
- Do NOT use the adapter near medical equipment, or persons using cardiac pacemakers or defibrillators. This can cause life-threatening electromagnetic interference.
- Do NOT use the adapter near auto-control equipment such as automatic doors or fire alarm equipment. This can cause accidents due to erroneous equipment behaviour.
- In case of abnormal odour or sound, overheating, or smoke coming out of the adapter, immediately disconnect the indoor unit from its power supply. Otherwise, this can lead to fire or malfunction. If this happens, consult your dealer.
- In case you drop or damage the adapter, disconnect the indoor unit from its power supply. Otherwise, this can lead to fire or malfunction. If this happens, consult your dealer.



NOTICE

Do not use the adapter near microwave ovens. This can affect wireless LAN communications.

9 Troubleshooting

9.1 Overview: Troubleshooting

This chapter describes what to do in case of problems. It contains information about solving problems based on the symptoms listed below.

9.1.1 Symptom: The LEDs do not turn on when the adapter is connected to the unit and the unit is powered ON

Possible causes	Corrective action
The adapter is wired to the wrong connectors on the indoor unit.	Make sure that the LAN adapter is correctly connected to the indoor unit. See the connection guidelines in the indoor unit manual.

9.1.2 Symptom: The adapter is NOT responding to interaction with the indoor unit

Possible causes	Corrective action
The connection cable to connect the adapter to the indoor unit is incompatible with the unit.	Make sure you are connected to a compatible unit. Check the compatibility of the indoor unit with the adapter in the indoor unit manual

9.1.3 Symptom: Nothing happens when the adapter is in AP mode

Possible causes	Corrective action
The firmware is corrupted.	Contact your dealer to report the firmware issue.







ERC



Copyright 2020 Daikin

DAIKIN EUROPE N.V.

Zandvoordestraat 300, B-8400 Oostende, Belgium

4P624189-1B 2023.10