



Installer reference guide

Wireless LAN connecting adapter

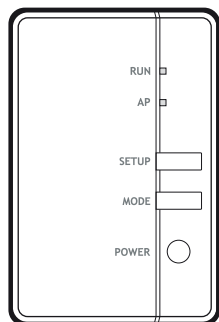


Table of contents

| | | |
|----------|---|-----------|
| 1 | About this document | 3 |
| 2 | Specific installer safety instructions | 4 |
| 3 | About the adapter | 5 |
| 3.1 | Components..... | 5 |
| 3.2 | Basic parameters..... | 5 |
| 3.3 | Compatibility | 6 |
| 4 | About the box | 7 |
| 4.1 | To unpack the adapter..... | 7 |
| 5 | Installation | 8 |
| 5.1 | Precautions when installing the adapter..... | 8 |
| 5.2 | Overview: Installation | 8 |
| 5.3 | Preparing the installation site..... | 8 |
| 5.3.1 | Installation site requirements | 8 |
| 5.4 | Connecting the electrical wiring..... | 9 |
| 5.4.1 | Overview of electrical connections..... | 9 |
| 5.4.2 | About connecting the electrical wiring..... | 9 |
| 5.4.3 | Precautions when connecting the electrical wiring..... | 9 |
| 5.4.4 | To connect the adapter with the unit..... | 9 |
| 5.5 | Closing the adapter | 10 |
| 5.5.1 | To close the adapter | 10 |
| 5.6 | Mounting the adapter | 11 |
| 5.6.1 | About mounting the adapter | 11 |
| 5.6.2 | To mount the adapter | 11 |
| 5.7 | Opening the adapter..... | 12 |
| 5.7.1 | About opening the adapter..... | 12 |
| 5.7.2 | To open the adapter..... | 12 |
| 6 | Starting up the system | 14 |
| 7 | Configuration | 15 |
| 7.1 | To install the Daikin Residential Controller application | 15 |
| 7.2 | To configure the adapter | 15 |
| 8 | Hand-over to the user | 16 |
| 9 | Troubleshooting | 17 |
| 9.1 | Overview: Troubleshooting | 17 |
| 9.1.1 | Symptom: The LEDs do not turn on when the adapter is connected to the unit and the unit is powered ON | 17 |
| 9.1.2 | Symptom: The adapter is NOT responding to interaction with the indoor unit..... | 17 |
| 9.1.3 | Symptom: Nothing happens when the adapter is in AP mode | 17 |

1 About this document

Target audience

Authorised installers

Documentation set

This document is part of a documentation set. The complete set consists of:

- **General safety precautions:**

- Safety instructions that you must read before installing
- Format: Paper (in the box of the indoor unit)

- **Installation manual:**

- Installation instructions
- Format: Paper (supplied in the kit)

- **Installer reference guide:**

- Installation instructions, configuration, application guidelines,...
- Format: Digital files on <http://www.daikineurope.com/support-and-manuals/product-information/>

- **Declaration of conformity:**



INFORMATION: Declaration of conformity

Hereby, Daikin Industries Czech Republic s.r.o. declares that the radio equipment type BRP069C41 is in compliance with the Directive 2014/53/EU. The original declaration of conformity is available from <http://www.daikineurope.com/support-and-manuals/product-information/>.



INFORMATION

For details on specifications, setting methods, FAQ, troubleshooting tips and the latest version of this manual, visit app.daikineurope.com.



Latest revisions of the supplied documentation may be available on the regional Daikin website or via your dealer.

The original documentation is written in English. All other languages are translations.

2 Specific installer safety instructions

Always observe the following safety instructions and regulations.

Installation (see "5 Installation" [▶ 8])



DANGER: RISK OF ELECTROCUTION

- Turn off the power supply before installing the adapter.
- Do NOT handle the adapter with wet hands.
- Do NOT let the adapter get wet.
- Do NOT disassemble, modify or repair the adapter.
- Grip the connector when disconnecting the connection cable.
- Turn OFF the power supply in case the adapter gets damaged.



DANGER: RISK OF ELECTROCUTION

Do NOT turn on the power supply before you have connected the electrical wiring, closed the adapter, and mounted it to the indoor unit.



DANGER: RISK OF ELECTROCUTION

Before opening the adapter, turn OFF the power to the indoor unit.

Hand over to the user (see "8 Hand-over to the user" [▶ 16])



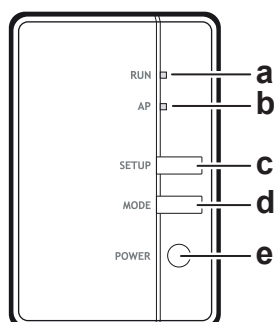
DANGER

- Do NOT disassemble, modify, or repair the adapter. This can cause fire, electrical shock, or injury.
- Do NOT allow the adapter to get wet or use it when bathing or doing similar activities with water. This can cause electrical shock or fire.
- Do NOT use the adapter near medical equipment, or persons using cardiac pacemakers or defibrillators. This can cause life-threatening electromagnetic interference.
- Do NOT use the adapter near auto-control equipment such as automatic doors or fire alarm equipment. This can cause accidents due to erroneous equipment behaviour.
- In case of abnormal odour or sound, overheating, or smoke coming out of the adapter, immediately disconnect the indoor unit from its power supply. Otherwise, this can lead to fire or malfunction. If this happens, consult your dealer.
- In case you drop or damage the adapter, disconnect the indoor unit from its power supply. Otherwise, this can lead to fire or malfunction. If this happens, consult your dealer.

3 About the adapter

Wireless LAN adapter to connect the heat pump system to the Daikin Cloud via the internet, allowing for control of the heat pump system with the Daikin Residential Controller app.

3.1 Components



- a** RUN lamp (orange). Lights when connecting to a router (wireless LAN access point).
- b** AP lamp
- c** SETUP button. Use when connecting to a router (wireless LAN access point).
- d** MODE button
- e** POWER button. Turns the WLAN adapter ON/OFF when pressed.

3.2 Basic parameters

| Parameter | Value |
|--------------------------|--|
| Frequency range | 2400 MHz~2483.5 MHz |
| Radio protocol | IEEE 802.11b/g/n |
| Radio frequency channel | 13 ch |
| Output power | 13 dBm |
| Effective radiated power | 15 dBm (11b) / 14 dBm (11g) / 14 dBm (11n) |
| Power supply | DC 14 V/ 16 V / 100 mA |

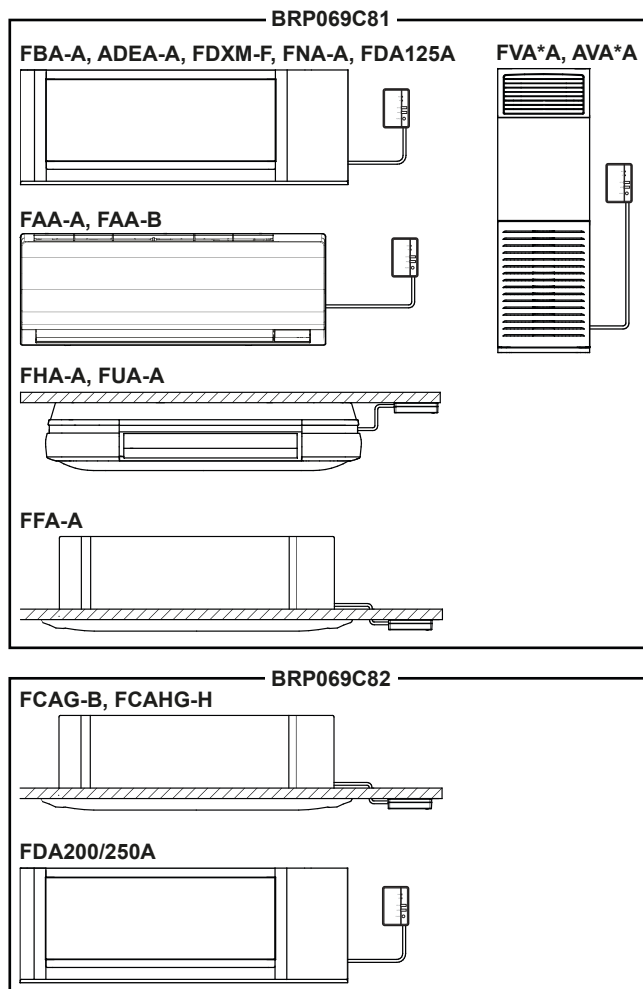
3.3 Compatibility

Make sure the indoor unit is compatible for use with the adapter. For the latest details about installation of the adapter and applicable units, visit app.daikineurope.com.



INFORMATION

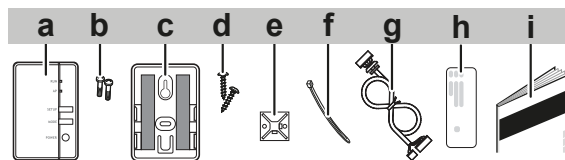
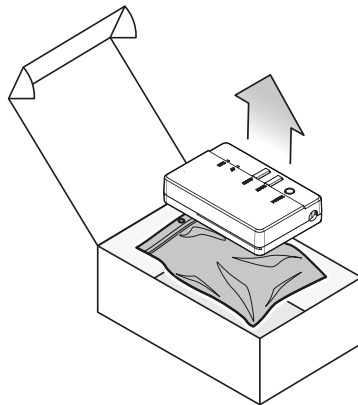
Actual appearance of the indoor units may differ from the illustration.



4 About the box

4.1 To unpack the adapter

- 1** Open the box.
- 2** Take out the adapter.
- 3** Separate the accessories.



- a** Adapter
- b** Screws (M3×8) for the adapter
- c** Adapter holder with double face tape
- d** Mounting screws for the holder (M3×16)
- e** Cable tie mounting
- f** Cable tie
- g** Connection cable
- h** Serial number sticker (SSID, KEY, MAC)
- i** Installation manual

5 Installation

5.1 Precautions when installing the adapter



DANGER: RISK OF ELECTROCUTION

- Turn off the power supply before installing the adapter.
- Do NOT handle the adapter with wet hands.
- Do NOT let the adapter get wet.
- Do NOT disassemble, modify or repair the adapter.
- Grip the connector when disconnecting the connection cable.
- Turn off the power supply in case the adapter gets damaged.

5.2 Overview: Installation

The installation of the adapter consists of the following stages:

- 1 Connecting the electrical wiring;
- 2 Closing the adapter;
- 3 Mounting the adapter to the unit.



INFORMATION

Where to connect the electrical wiring on the indoor unit, and where to mount the adapter, depends on the type of indoor unit. For more information, see the addendum book for optional equipment of the indoor unit.

5.3 Preparing the installation site

Choose an installation location with sufficient space for carrying the unit in and out of the site.

Do NOT install the unit in places often used as work place. In case of construction works (e.g. grinding works) where a lot of dust is created, the unit MUST be covered.

5.3.1 Installation site requirements

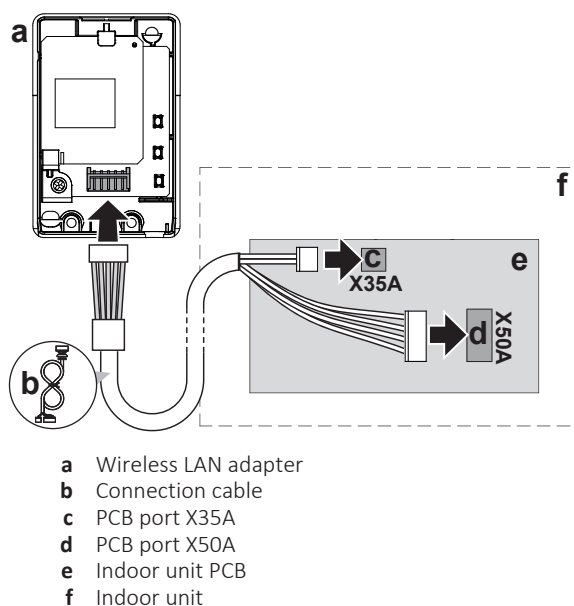
The adapter is designed to be mounted to the indoor unit, in dry, indoor locations only.

Do NOT install the adapter in the following places:

- In places where it is exposed to direct sunlight.
- In places where it is near a heat source.
- In places where it is exposed to a source of steam.
- In places where it is exposed to machine oil vapour.

5.4 Connecting the electrical wiring

5.4.1 Overview of electrical connections



5.4.2 About connecting the electrical wiring

Typical workflow

Connecting the electrical wiring typically consists of the following stages:

- 1 Connecting one end of the connection cable to the indoor unit;
- 2 Connecting the other end of the connection cable to the adapter.

5.4.3 Precautions when connecting the electrical wiring



INFORMATION

Also read the precautions and requirements in the following chapters:

- General safety precautions
- Preparation

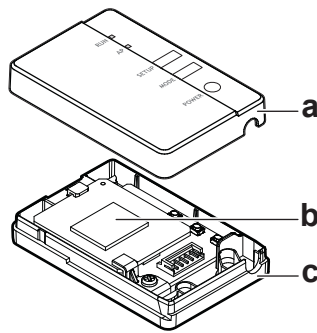


DANGER: RISK OF ELECTROCUTION

Do NOT turn on the power supply before you have connected the electrical wiring, closed the adapter, and mounted it to the indoor unit.

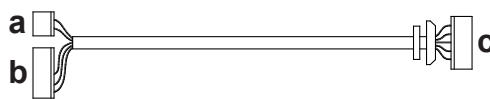
5.4.4 To connect the adapter with the unit

- 1 Separate the upper casing from the lower casing.



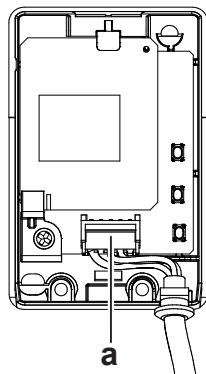
- a Upper casing
- b Adapter PCB
- c Lower casing

- 2 Connect the indoor unit side connector to the indoor unit PCB port X35A and X50A.
- 3 Connect the adapter side connector to the adapter.



- a Indoor unit side connector X35A
- b Indoor unit side connector X50A
- c Adapter side connector

- 4 Fasten the cable and ensure strain relief.



- a Connector



NOTICE

ALWAYS connect a wired or wireless remote controller (**Example:** BRC1H, BRC7), otherwise the online controller will NOT operate.



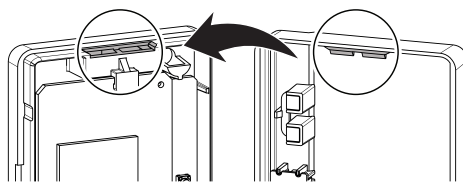
INFORMATION

Provide strain relief at indoor unit side by using the cable tie and cable tie mounting that are included as accessory.

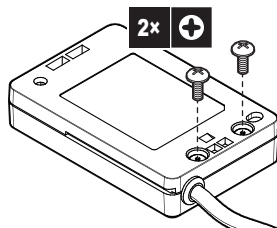
5.5 Closing the adapter

5.5.1 To close the adapter

- 1 Hook the front casing into the rear casing.

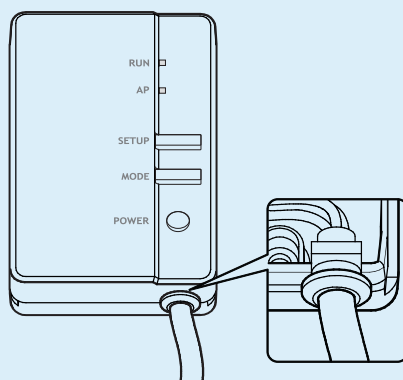


- 2 Insert the two screws from the accessory bag.



NOTICE

After closing the adapter, check that the connection cable is securely fastened.



5.6 Mounting the adapter

5.6.1 About mounting the adapter

Use the adapter holder (accessory) to mount the adapter. There are 2 ways of mounting the adapter holder:

- Fixing the adapter holder to the surface using screws.
- Fixing the adapter holder to the surface using double face tape.

5.6.2 To mount the adapter



NOTICE

- If using double face tape for mounting, make sure that the part of the surface to which you mount the holder is clean and degreased.
- Make sure to mount the holder to the surface firmly, so that it can bear the weight of the adapter.

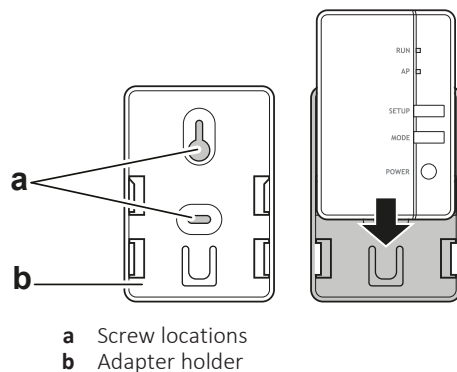


INFORMATION

The exact location of the holder depends on the type of indoor unit. For more information, visit app.daikineurope.com.

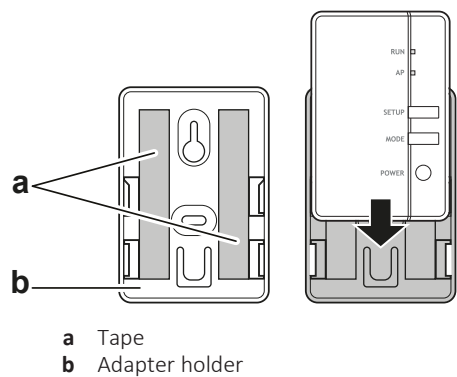
When using screws

- 1 Fix the adapter holder on the wall/surface with 2 screws M3×16 (accessory).
- 2 Slide the adapter into the holder.



When using double side tape

- 3 Attach the double-sided tape to the adapter holder.
- 4 With the tape, mount the holder to the surface.
- 5 Slide the adapter into the holder.



5.7 Opening the adapter

5.7.1 About opening the adapter

The average installation procedure does NOT involve opening the adapter. However, in case you do have to open it, follow below procedure.

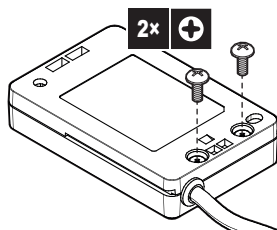


DANGER: RISK OF ELECTROCUTION

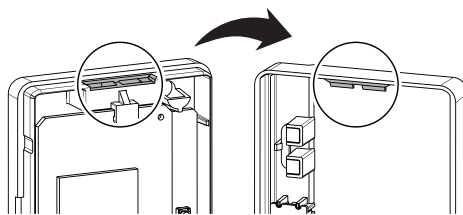
Before opening the adapter, turn OFF the power to the indoor unit.

5.7.2 To open the adapter

- 1 Remove the screws with a screwdriver.



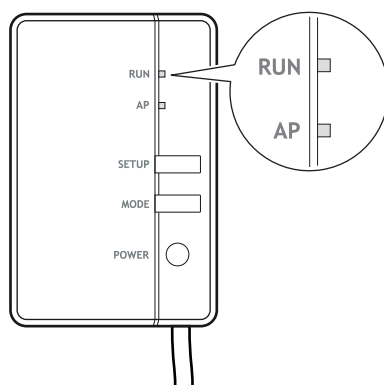
- 2** Unhook the front casing from the rear casing.



6 Starting up the system

The adapter gets its power from the indoor unit. For the adapter to function, make sure it is connected to the indoor unit, and the indoor unit is powered on.

Turn on the power supply and check that the RUN lamp of the product blinks.



7 Configuration

The customer is responsible for providing:

- Smartphone or tablet with minimum supported version of Android or iOS, specified on app.daikineurope.com.
- Internet line and communication device, such as a modem, router, etc.
- Wireless LAN access point
- Installed free Daikin Residential Controller application.

7.1 To install the Daikin Residential Controller application

- 1 Open:
 - Google Play for appliances using Android.
 - App Store for appliances using iOS.
- 2 Search for Daikin Residential Controller.
- 3 Follow the directions on the screen to install.

7.2 To configure the adapter

Open the Daikin Residential Controller application on your smartphone or tablet PC and follow the in-app instructions.

For this Wireless LAN adapter, WPS configurator is available, follow the in-app instructions.

app.daikineurope.com



8 Hand-over to the user

After having installed and configured the adapter, hand over this installation manual to the user and make him/her aware of the following safety precautions.



DANGER

- Do not disassemble, modify, or repair the adapter. This can cause fire, electric shock, or injury.
- Do not allow the adapter to get wet or use it when bathing or doing similar activities with water. This can cause electric shock or fire.
- Do not use the adapter near medical equipment, or persons using cardiac pacemakers or defibrillators. This can cause life-threatening electromagnetic interference.
- Do not use the adapter near auto-control equipment such as automatic doors or fire alarm equipment. This can cause accidents due to erroneous equipment behaviour.
- In case of abnormal odour or sound, overheating, or smoke coming out of the adapter, immediately disconnect the indoor unit from its power supply. Otherwise, this can lead to fire or malfunction. If this happens, consult your dealer.
- In case you drop or damage the adapter, disconnect the indoor unit from its power supply. Otherwise, this can lead to fire or malfunction. If this happens, consult your dealer.



NOTICE

Do not use the adapter near microwave ovens. This can affect wireless LAN communications.

9 Troubleshooting

9.1 Overview: Troubleshooting

This chapter describes what to do in case of problems. It contains information about solving problems based on the symptoms listed below.

9.1.1 Symptom: The LEDs do not turn on when the adapter is connected to the unit and the unit is powered ON

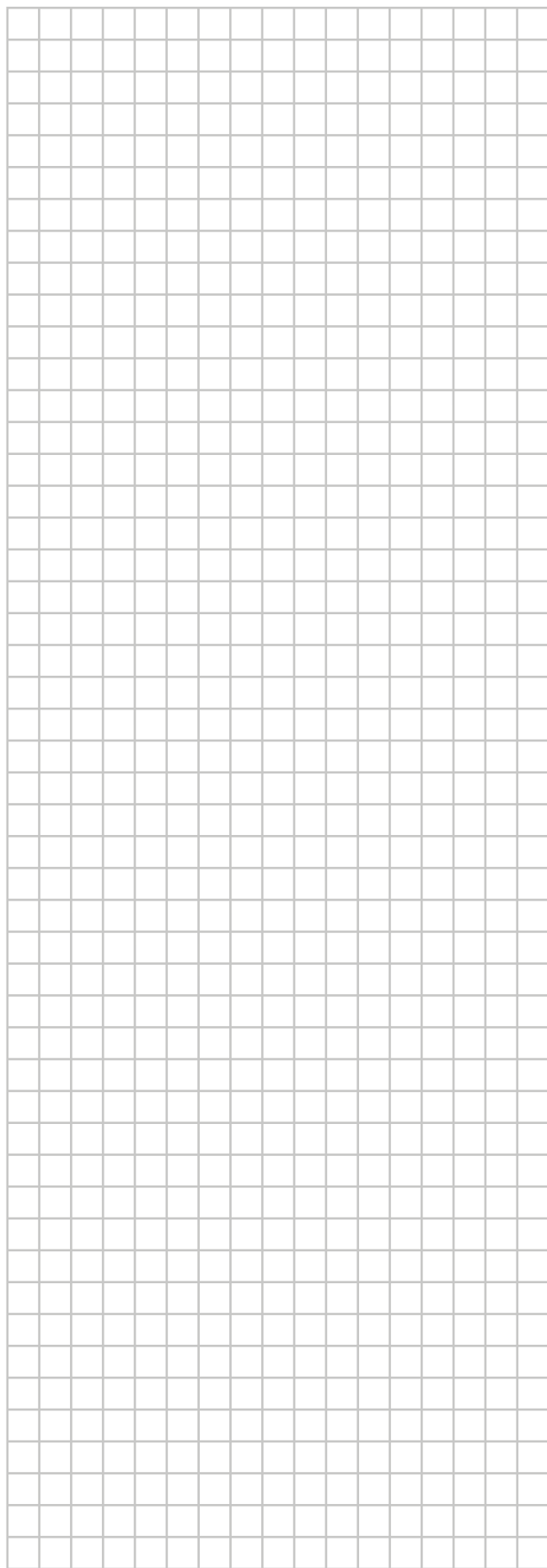
| Possible causes | Corrective action |
|--|--|
| The adapter is wired to the wrong connectors on the indoor unit. | Make sure that the LAN adapter is correctly connected to the indoor unit. See the connection guidelines in the indoor unit manual. |

9.1.2 Symptom: The adapter is NOT responding to interaction with the indoor unit

| Possible causes | Corrective action |
|---|---|
| The connection cable to connect the adapter to the indoor unit is incompatible with the unit. | Make sure you are connected to a compatible unit. Check the compatibility of the indoor unit with the adapter in the indoor unit manual |

9.1.3 Symptom: Nothing happens when the adapter is in AP mode

| Possible causes | Corrective action |
|----------------------------|---|
| The firmware is corrupted. | Contact your dealer to report the firmware issue. |







DAIKIN INDUSTRIES CZECH REPUBLIC s.r.o.

U Nové Hospody 1/1155, 301 00 Plzeň Skvrňany, Czech Republic

DAIKIN EUROPE N.V.

Zandvoordestraat 300, B-8400 Oostende, Belgium

Copyright 2021 Daikin

4P650468-1A 2021.07